

## **Social and Community Infrastructure Audit**

Proposed Strategic  
Housing Development at  
Moygaddy, Maynooth  
Environs, Co. Meath





## DOCUMENT DETAILS

Client: **Sky Castle Ltd**

Project Title: **Proposed Strategic Housing Development at Moygaddy, Maynooth Environs, Co. Meath**

Project Number: **210414**

Document Title: **Social and Community Infrastructure Audit**

Document File Name: **2022.08.18 - SCIA - F1 - 210414**

Prepared By: **MKO  
Tuam Road  
Galway  
Ireland  
H91 VW84**



Rev	Status	Date	Author(s)	Approved By
01	Draft	16/06/2022	ER/OMcC	OMcC
02	Draft	12/08/2022	ER/OMcC	PH
F	Final for Client Review	17/08/2022	ER/OMcC	PH
F1	Final	18/08/2022	ER/OMcC	PH

# Table of Contents

1.	<b>INTRODUCTION</b> .....	<b>2</b>
2.	<b>SITE CONTEXT</b> .....	<b>3</b>
	2.1 Site Location & Description.....	3
	2.2 Proposed Development.....	4
3.	<b>METHODOLOGY</b> .....	<b>6</b>
4.	<b>DEMOGRAPHIC PROFILE</b> .....	<b>7</b>
5.	<b>POLICY CONTEXT</b> .....	<b>10</b>
	5.1 Meath County Development Plan 2021-2027 .....	10
	5.2 Development Plan Guidelines for Planning Authorities 2022 .....	10
6.	<b>EXISTING SOCIAL AND COMMUNITY FACILITIES</b> .....	<b>11</b>
	6.1 Green and Open Space.....	18
	6.2 Educational Facilities.....	19
	6.3 Childcare Facilities .....	19
	6.4 Healthcare .....	20
	6.5 Transportation.....	20
	6.6 Retail.....	21
	6.7 Recreational Facilities.....	21
	6.8 Community Facilities & Emergency Services .....	21
7.	<b>PROPOSED FACILITIES</b> .....	<b>22</b>
8.	<b>CONCLUSION</b> .....	<b>23</b>

## TABLE OF TABLES

<i>Table 1: Population Change from 2011 to 2016 within the Study Area</i> .....	7
<i>Table 2: Population Breakdown of the Study Area (Rodanstown and Maynooth ED)</i> .....	9
<i>Table 3: Population Breakdown of the State</i> .....	9
<i>Table 4: Existing Infrastructure in the Study Area</i> .....	12

## TABLE OF FIGURES

<i>Figure 1: Location of the development within the Dublin metropolitan area. Source: MCORM, 2021</i> .....	3
<i>Figure 2: Aerial View of the Subject Site (Source: Google Maps, Edited by MKO)</i> .....	4
<i>Figure 3: 2km Catchment Area with the Subject Site Identified with a Red Star (Source: MyPlan.ie)</i> .....	6
<i>Figure 4: Demographic Study Area (Source: MyPlan.ie, Edited by MKO)</i> .....	7
<i>Figure 5: Population Distribution of the Study Area in 2011</i> .....	8
<i>Figure 6: Population Distribution of the Study Area in 2016</i> .....	8
<i>Figure 7: Existing Social and Community Infrastructure within the Study Area (Source: MyPlan.ie, Edited by MKO)</i> .....	11
<i>Figure 8: Creche Floor Plan (Source MCORM dwg no. PL500)</i> .....	22

# 1. INTRODUCTION

MKO have been instructed by Sky Castle Limited to prepare this Social & Community Infrastructure Audit (SCIA) for a Strategic Housing Development at Moygaddy, Maynooth Environs, Co. Meath.

The purpose of this audit is to assess the existing and permitted social and community facilities and services in the surrounding area that contribute to the quality of life of residents.

The Pre-application Consultation Opinion requested that a 'Community and Social Infrastructure Audit' be submitted with the final application to An Bord Pleanála. This report has been prepared in response to this request. The report examines the availability of services to support the proposed development in relation to green and open space, education, childcare, healthcare, transportation, retail, recreation, community, and other facilities. These services have been mapped within a buffer of approximately 2km around the site.

This SCIA has been prepared in line with the requirements of the Meath County Development Plan, specifically policy SOC POL 6 which states:

*"To require that all new residential development applications of 50 units or more on zoned lands are accompanied by a Social Infrastructure Assessment (SIA) to determine if social and community facilities in the area are sufficient to provide for the needs of the future residents (of all age cohorts). This should include details regarding the following essential facilities: Playgrounds, parks and other green spaces, education, childcare, health and others such as shops, banks, post offices, community meeting rooms/centres and recreational facilities. The assessment should identify membership and non-membership facilities which allow access for all groups. Where deficiencies are identified, proposals will be required to accompany the Planning application to address the deficiency. In certain cases however, residential development under these thresholds may, at the discretion of the Planning Authority, require the submission of a SIA".*

## 2. SITE CONTEXT

### 2.1 Site Location & Description

The subject site is located on the southernmost extent of County Meath in an area known as the Maynooth Environs. The lands are located within the Dublin Metropolitan Area Strategic Plan (MASP), within a radius of 20km distance to Dublin City Centre. The subject site is also situated within the M-4 strategic corridor, circa 2km from the motorway and railway networks. See **Figure 1**.

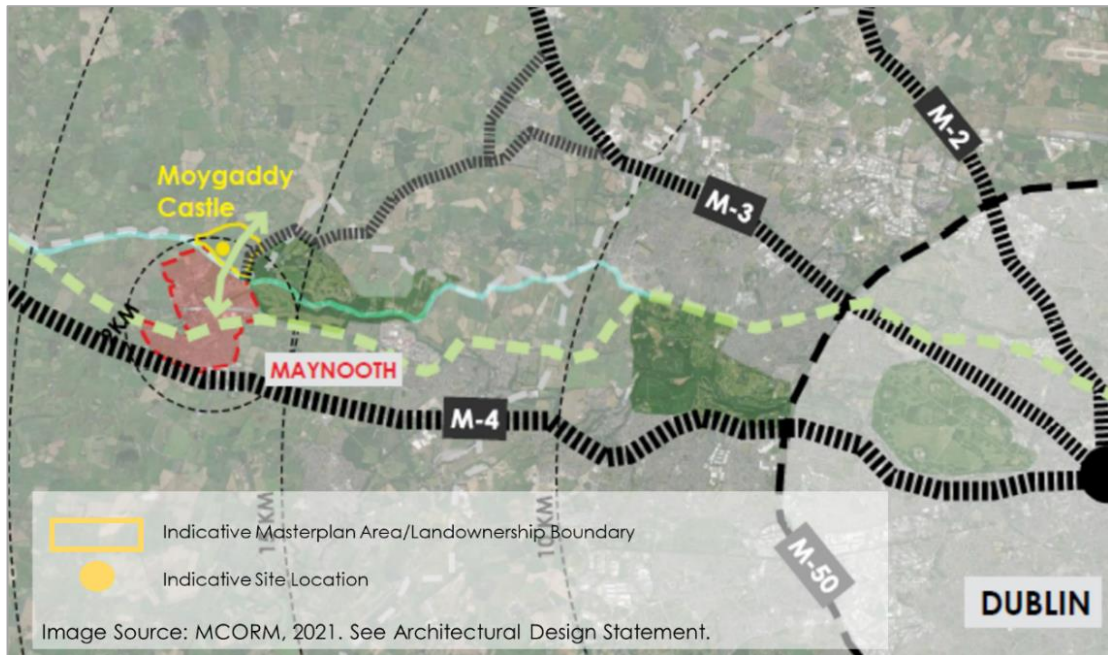


Figure 1: Location of the development within the Dublin metropolitan area. Source: MCORM, 2021

The overall prospective application gross site area extends to 19.52 ha (195,223 sqm), including 6.93 ha (69,300 sqm) of high amenity lands. The net developable area extends to 7.89 ha (78,900 sqm). The site forms part of a larger strategic landbank on zoned lands which extend to circa 96.7 ha.



Figure 2: Aerial View of the Subject Site (Source: Google Maps, Edited by MKO)

## 2.2 Proposed Development

A description of the proposed development, as per the public notices, is as follows:

*Planning Permission is sought by Sky Castle Ltd. for the development of a site which extends to 19.52 hectares gross site area in the townland of Moygaddy, Maynooth Environs, Co. Meath. The net developable area equates to 7.89 hectares which equates to a residential density of 45.6 units per hectare.*

*The proposed development will consist of the following:*

1. *Construction of 360 no. residential units comprising:*
  - i. *196 no houses (including 19 no. 2 beds, 156 no. 3 beds and 21 no. 4 beds).*
  - ii. *102 no. duplexes (including 51 no. 1 beds and 51 no. 2 beds) set out in 6 no. blocks.*
  - iii. *62 no. apartments (including 26 no. 1 beds and 36 no. 2 beds) set out in 2 no. blocks.*
2. *Provision of a public park and playground with associated 42 no. car parking spaces adjacent to Moygaddy Castle and pedestrian and cyclist links along the River Rye. The overall public open space (including the High Amenity Lands) equates to 7.98 hectares.*
3. *Provision of private open spaces in the form of balconies and terraces is provided to all individual apartments and duplexes to all elevations.*
4. *Development of a two-storey creche facility (514 sqm), outdoor play area and associated parking of 29 no. spaces.*
5. *Provision of a single storey Scout Den facility, including a hall, kitchen, meeting room and ancillary facilities (220sqm) and associated parking of 6 no. spaces.*
6. *Provision of 4 no. bridge structures comprising:*
  - i. *an integral single span bridge at Moyglare Hall over the River Rye Water to connect with existing road infrastructure in County Kildare and associated floodplain works and embankments.*
  - ii. *a new pedestrian and cyclist bridge at Kildare Bridge which will link the proposed site with the existing road network in County Kildare.*

- iii. a new pedestrian and cycle bridge across Blackhall Little Stream (also known as the Moyglare Stream) on the L22143 adjacent to the existing unnamed bridge.
  - iv. a new pedestrian and cycle bridge over the Blackhall Little Stream (also known as the Moyglare Stream) linking the proposed residential site with the proposed Childcare Facility, Scout Den and Moygaddy Castle Public Park.
7. Provision of 500m of distributor road comprising of 7.0m carriageway with turning lane where required, footpaths, cycle tracks and grass verges. All associated utilities and public lighting including storm water drainage with SuDS treatment and attenuation.
8. Proposed road improvement and realignment works including:
  - i. realignment of a section of the existing L6219 local road, which will entail the demolition of an existing section of the road which extends to circa 2,500 sqm.
  - ii. Provision of pedestrian and cycle improvement measures along the L6219 and L22143 which abuts the boundary of Moygaddy House which is a Protected Structure (RPS ref 91558).
  - iii. Provision of pedestrian and cycle improvement measures along the R157 which abuts the Carton Demense Wall which is a Protected Structure (RPS Ref 91556).
9. Provision of 2 no. vehicular and pedestrian accesses from the L6219 local road, 1 no. vehicular and pedestrian entrance from the L22143 and an additional vehicular and pedestrian access from the R157 to the Childcare and Scout Den facilities.
10. The proposed development will provide 283 no. of bicycle parking spaces, of which 200 no. are long term spaces in secure bicycle stores and 83 no. are short term visitor bicycle parking spaces. 12 no. bicycle spaces are provided for the creche and 12 no. bicycle spaces are provided for the Scout Den.
11. A total of 667 no. car parking spaces are provided on site located at surface level. The car parking provision includes 10 no. Electric Vehicle charging and Universally Accessible spaces allocated for the Apartment & Duplex units. All Houses will be constructed with provision for EV Charging.
12. Provision of site landscaping, public lighting, bin stores, 3 no. ESB unit substations, site services and all associated site development works.
13. A Natura Impact Statement (NIS) and Environmental Impact Assessment Report (ELAR) has been included with this application.

### 3. METHODOLOGY

In order to assess the context of the subject site with regard to social and community facilities, a geospatial survey was undertaken to determine the current population demographics and levels of relevant services in the study area.

The following datasets were used:

- CSO Statistics
- Google Maps
- Google Images
- MyPlan.ie
- Department of Education

The following documents have also informed this report:

- Meath County Development Plan 2021-2027
- Development Plan Guidelines for Planning Authorities 2022

The catchment area considers existing social and community infrastructure located within 2km radius of the subject site. The 2km catchment relates to a sustainable travel distance by foot, cycling or public transport to access higher order services such as schools, which is utilised in assessing the provision of facilities.

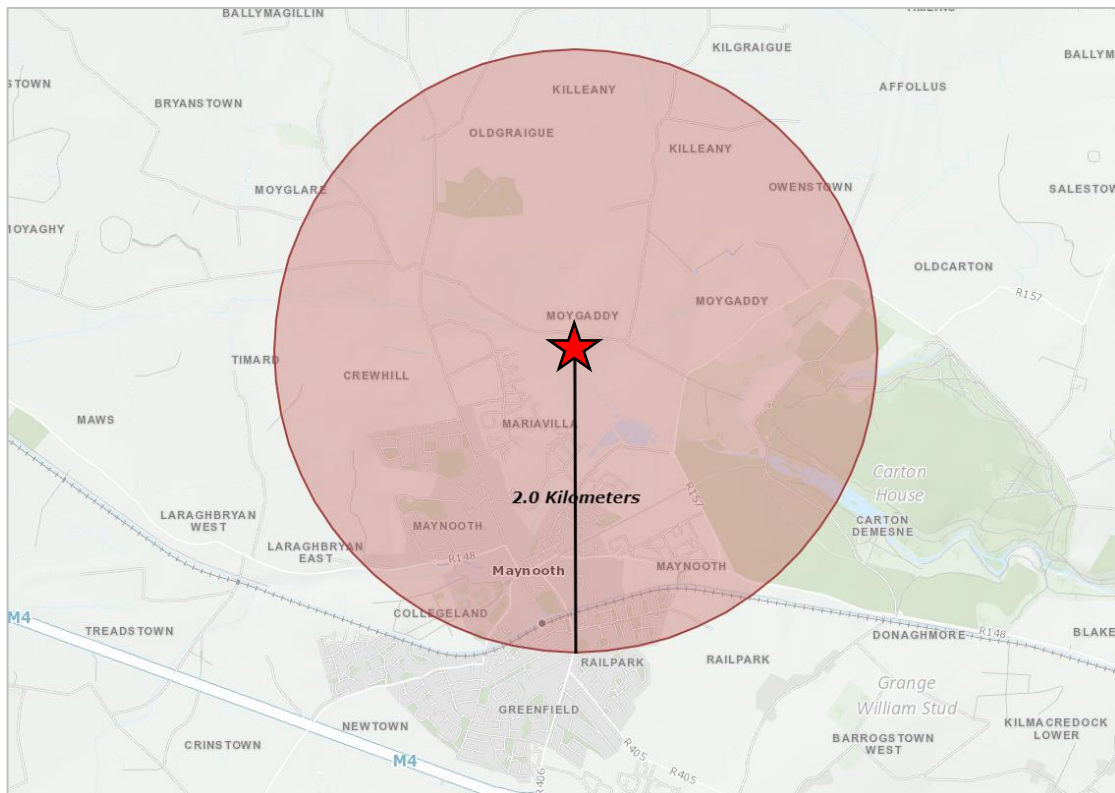


Figure 3: 2km Catchment Area with the Subject Site Identified with a Red Star (Source: MyPlan.ie)



## 4. DEMOGRAPHIC PROFILE

The demographic profile of the study area has been analysed using data from the 2011 and 2016 Census. The 2022 Census took place on the 3<sup>rd</sup> of April 2022. It was postponed from April 2021 due to the Covid-19 pandemic. The CSO will publish the full set of Census 2022 results between April and December 2023<sup>1</sup>. Therefore, Census data from 2011 and 2016 has been used for this demographic assessment. Preliminary data from the 2022 Census suggests that Meath has had a population growth rate of 12.9% since the 2016 Census, being the second highest growth rate in the country<sup>2</sup>.

The proposed development is located within the Rodanstown Electoral Division, and on the border of the Maynooth Electoral Division. For the purpose of a demographic assessment, a local catchment area was selected to include the Electoral Divisions (ED's) within 2km of the subject site. This area is illustrated in **Figure 4** below and is referred to as the demographic study area. The demographic study area had a combined population of 17,121 people in the 2016 Census. The population of the study area increased by 16.81% (2,465 people) between the 2011 and 2016 Census.

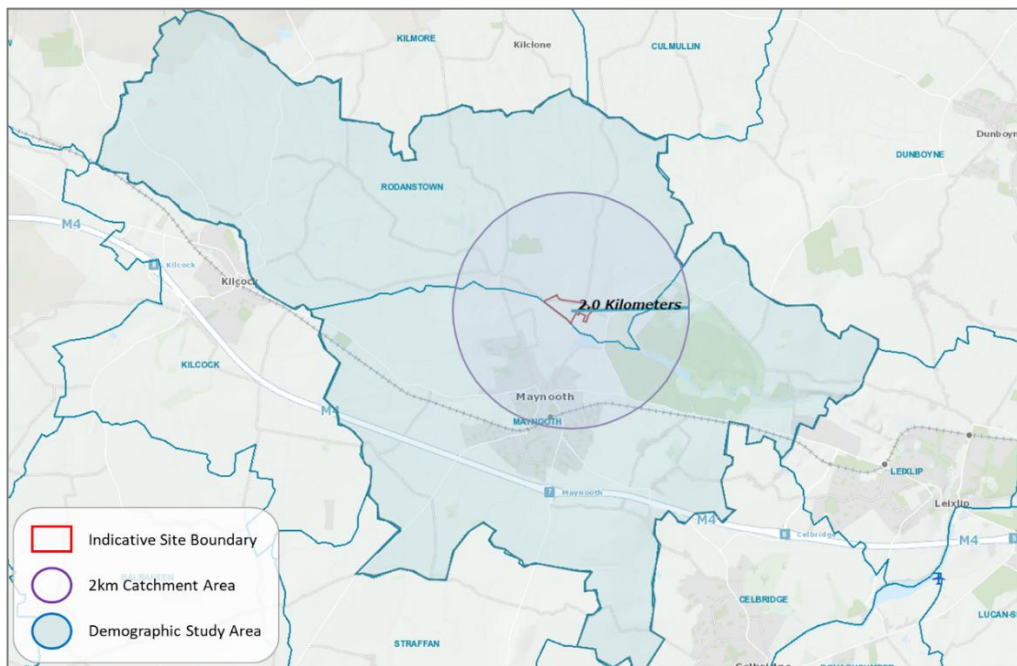


Figure 4: Demographic Study Area (Source: MyPlan.ie, Edited by MKO)

Table 1: Population Change from 2011 to 2016 within the Study Area

Electoral Division	Population 2011	Population 2016	Population Change	Percentage Change
Rodanstown	1,039	1,123	84	8.08%
Maynooth	13,617	15,998	2,381	17.48%
Total Study Area	14,656	17,121	2,465	16.81%

<sup>1</sup> <https://www.cso.ie/en/csolatestnews/pressreleases/2022pressreleases/presstatementcensusofpopulation2022-preliminaryresults/#:~:text=The%20CSO%20will%20publish%20the,such%20as%20housing%20and%20commuting.>

<sup>2</sup> <https://www.rte.ie/news/ireland/2022/06/23/1306398-census/#:~:text=The%20population%20of%20the%20Republic,the%20Central%20Statistics%20Office%20figures.>

A breakdown of the age profile of the demographic study area in comparison with the State average is outlined in **Tables 2 & 3** below. The age profile of the area is generally in line with the State average. It is noted that the percentage of young adults (19-24) in the demographic study area is 8.28% higher than the State average. It is considered that this higher volume of young adults is linked to National University of Ireland, Maynooth (NUIM), which is located within the study area and had an enrolment of 15,180 students in the 2021/2022 academic year. It is also noted that the older adult population (65+) is 5.59% lower than the State average.

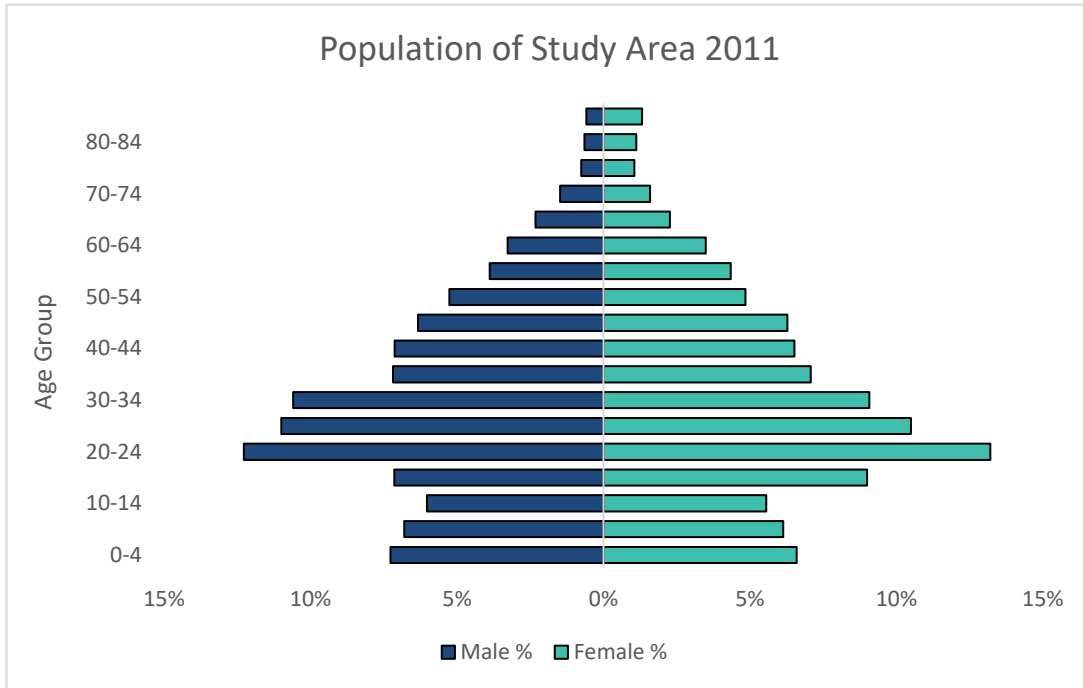


Figure 5: Population Distribution of the Study Area in 2011

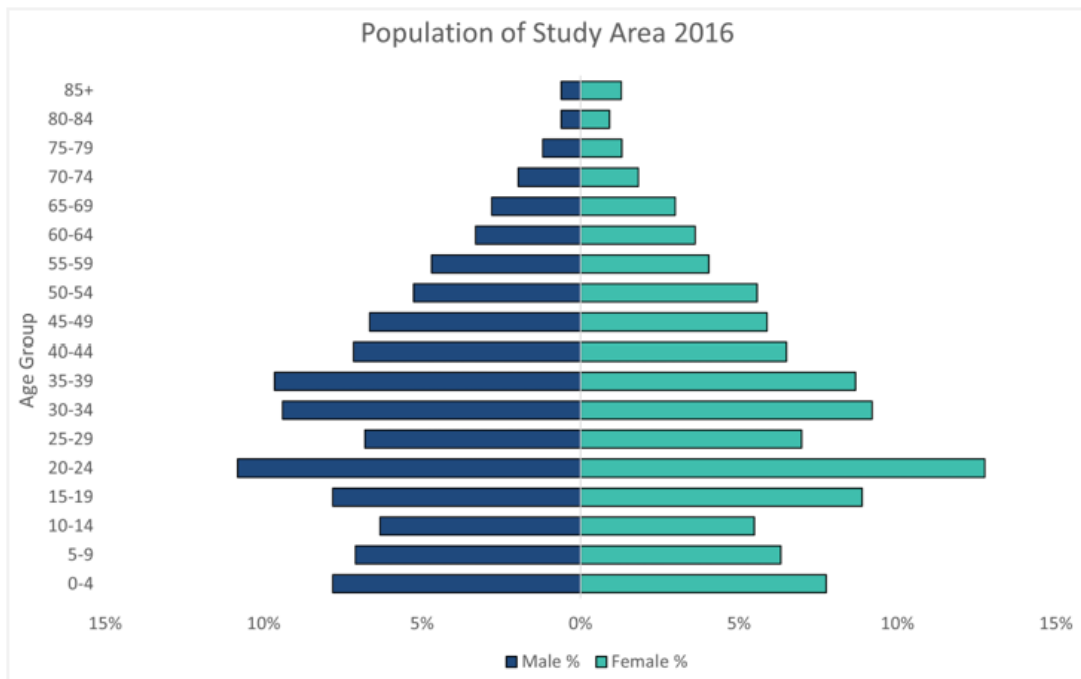


Figure 6: Population Distribution of the Study Area in 2016

Table 2: Population Breakdown of the Study Area (Rodanstown and Maynooth ED)

Age Group	2016 Population	Percentage of Total Cohort
Pre-school Children (0-4 years)	1333	7.79%
Primary School Children (5-12 years)	1719	10.04%
Secondary School Children (13-18 years)	1282	7.49%
Young Adults (19-24 years)	2609	15.24%
Adults (25-64 years)	8851	51.70%
Older Adults (65+ years)	1327	7.75%
Total	17,121	100%

Table 3: Population Breakdown of the State

Age Group	2016 Population	Percentage of Total Cohort
Pre-school Children (0-4 years)	331,515	6.97%
Primary School Children (5-12 years)	548,693	11.53%
Secondary School Children (13-18 years)	371,588	7.81%
Young Adults (19-24 years)	331,208	6.96%
Adults (25-64 years)	2,541,294	53.37%
Older Adults (65+ years)	637,567	13.34%
Total	4,761,865	100%

## 5. POLICY CONTEXT

### 5.1 Meath County Development Plan 2021-2027

**SH OBJ 24:** *To require that all new residential development applications of 50 units or more are accompanied by a Social Infrastructure Assessment (SIA) to determine if social and community facilities in the area are sufficient to provide for the needs of the future residents in accordance with the requirements of policy SOC POL 6 in the ‘Community Building Strategy’.*

**SOC POL 6:** *To require that all new residential development applications of 50 units or more on zoned lands are accompanied by a Social Infrastructure Assessment (SIA) to determine if social and community facilities in the area are sufficient to provide for the needs of the future residents (of all age cohorts). This should include details regarding the following essential facilities: **Playgrounds, parks and other green spaces, education, childcare, health and others such as shops, banks, post offices, community meeting rooms/centres and recreational facilities.** The assessment should identify **membership and non-membership facilities** which allow access for all groups. Where deficiencies are identified, proposals will be required to accompany the Planning application to address the deficiency. In certain cases however, residential development under these thresholds may, at the discretion of the Planning Authority, require the submission of a SIA.*

### 5.2 Development Plan Guidelines for Planning Authorities 2022

Section 7.3 of the guidelines outline a mandatory objective for social, community and cultural considerations. It states that “*The development plan should provide an evidence-based approach to the determination of requirements for new social, community and cultural facilities that will be required on foot of new development in an area.*”

The guidelines suggest that an objective for the preparation of a ‘Community, Social and Cultural Infrastructure Audit’ may be appropriate for areas that are likely to experience significant new development, in order to assess gaps and future requirements, especially where unclear or unknown to the extent that may be necessary. This approach should be based on planned population thresholds and demographic considerations in order to maximise the social return and community benefit generated.

## 6. EXISTING SOCIAL AND COMMUNITY FACILITIES

A summary of the existing community facilities is provided in this section of the report. These facilities are mapped in **Figure 7** and listed in **Table 4** below:

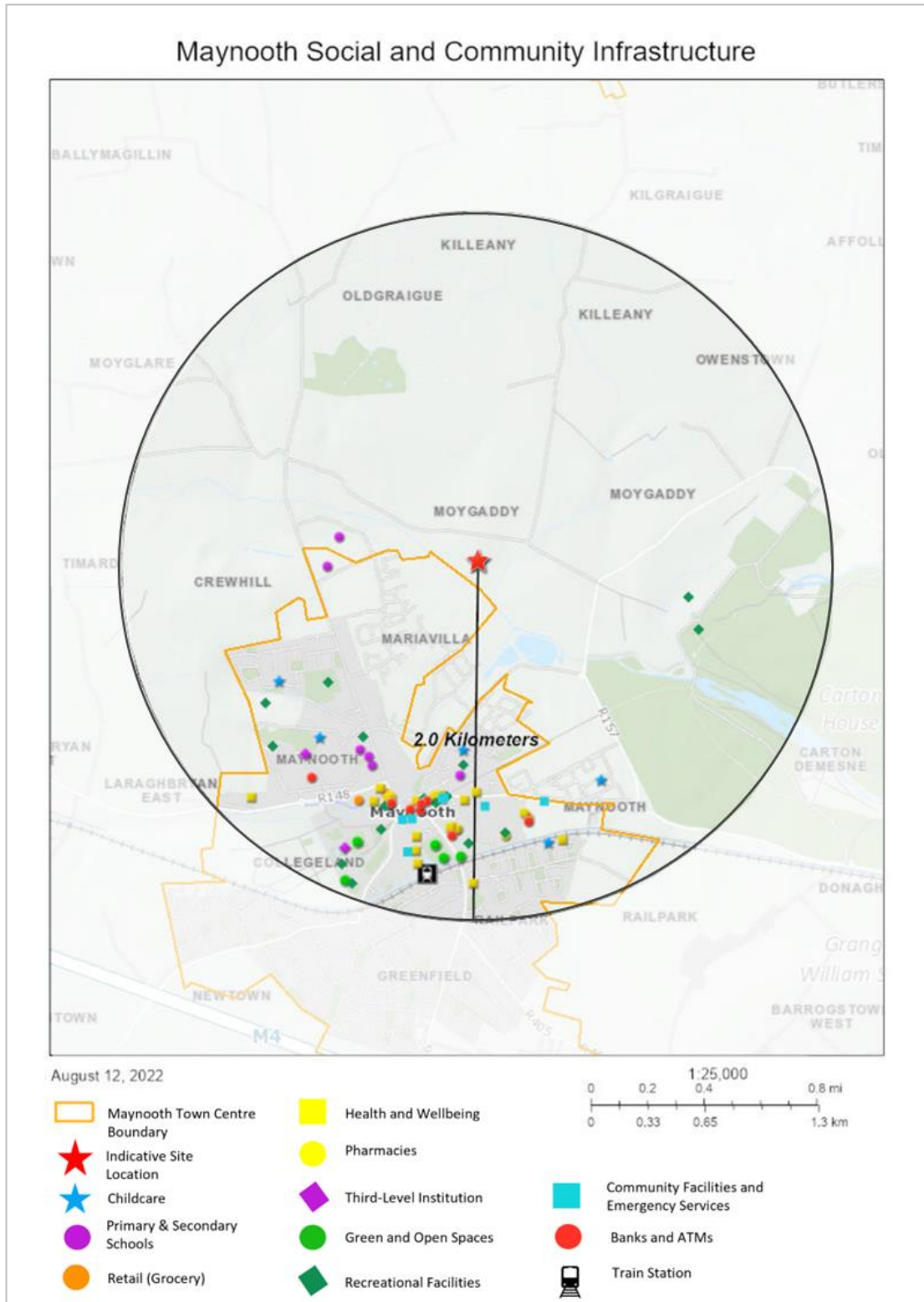


Figure 7: Existing Social and Community Infrastructure within the Study Area (Source: MyPlan.ie, Edited by MKO)

Table 4: Existing Infrastructure in the Study Area

Existing Infrastructure in the Study Area	
Green and Open Spaces (including playgrounds)	Maynooth Playground
	Harbour Field & Community Garden
	Royal Canal Greenway
	St. Joseph's Square
	Junior House Gardens
Educational Facilities	Gaelscoil Ruairí
	Maynooth Boys' National School
	Presentation Girls School Maynooth
	Gaelcholáiste, Mhaigh Nuad
	Maynooth Community College
	Maynooth Post Primary School
	St. Patrick's College, Maynooth
	National University of Ireland Maynooth
	Stepping Stones Special School
	Synergy Lifelong Learning - Inclusive Education Training
	Maynooth Further Education and Training Centre
	Divine Word School of English
Childcare	Little Harvard Crèche and Montessori
	Wise Owl Montessori & Playgroup
	Tiddlywinks & Scallywags Preschool
	Maynooth Day Nursery
	Maynooth University Crèche (Available to staff and students of the university)
Health and Wellbeing	Maynooth Health Centre
	Maynooth Medical Centre

Existing Infrastructure in the Study Area	
	Manor Mills Medical, Centric Health
	Glenroyal Medical Centre
	Park Lodge Medical Centre
	Maynooth Community Care Unit
	The Leinster Clinic (including a dental clinic, a physiotherapy practice, speech therapy and counselling)
	The Grove Physio Clinic
	PhysioFit Kildare
	Counselling Centre Maynooth
	SMD Therapy
	Maynooth Speech and Language Therapy
	Boyne Dental Maynooth
	Pearls Dental House Maynooth
	Carton Dental
	John Merrick Dental
	Moyglare Nursing Home
	Gildea's Opticians
	Mullins and Henry Opticians
	Specsavers Opticians and Audiologists
	Maynooth CarePlus Pharmacy
	McCormack's Pharmacy
McCartan's Pharmacy	
Hickey's Pharmacy	
Boots Pharmacy	
Transportation	Maynooth Railway Station
	St. Mary's Church, Stop 10049

Existing Infrastructure in the Study Area		
	Maynooth Station, Stop 3917	
	Glenroyal Hotel, Stop 135461	
	Maynooth SC, Stop 3966	
	Maynooth SC, Stop 3982	
	Maynooth, Stop 5113	
	Maynooth, Stop 3981	
	Newtown Grove, Stop	
	Old Greenfield, Stop 6089	
	Rail Park, Stop 3008	
	Straffan Road, Stop 3918	
	Maynooth University, Stop 103161	
	Retail	Tesco Extra
Dunnes Stores		
SuperValu		
Aldi		
Centra (Main Street)		
Centra (Straffan Road)		
Londis		
Greenfield Shopping Centre		
Carton Retail Park		
Manor Mills Shopping Centre		
Shoda Market Cafe		
Arkle Bar & Restaurant		
Avenue Cafe, Restaurant & Bar		
Picaderos Restaurant		
L'Art du Chocolat Cafe		



Existing Infrastructure in the Study Area	
	Donatello's Restaurant
	Red Torch Ginger Restaurant
	Fusion Restaurant
	Bistro 53
	Willow & Wild Cafe
	La Brasserie
	O'Neills Bar & Steakhouse
	Beetroot Healthy Food Vegan Restaurant
	Meridian 16
	Fitzgerald's Roost
	Orient Asian Restaurant and Sushi Bar
	Royal City Chinese Restaurant
	Yeah Burgr
	Stone Haven Restaurant
	Amber Tree Bistro
	Coffee Mill Bistro
	Sasta By The River
	Costa Coffee
	Starbucks
	Phoenix Restaurant (Maynooth University)
	LANA Maynooth Asian Street Food
	McDonald's Maynooth
	Emma's Place
	O'Briens Sandwich and Coffee Shop
	ELY Wine Store
	Harbour Cafe
	Brewhouse Coffee Maynooth

Existing Infrastructure in the Study Area	
	Puppa Coffee
	The Natural Bakery
	Royal City Korean Restaurant
	Apache Pizza
	Pizza Dog
	Food Guru
	Romayo's Maynooth
	Maximus Grill
	Supermac's & Papa John's
	Mams Indian Takeaway
	Oak Alley Cocktail Bar
	Brady's Clockhouse Pub
	Certa Fuel
	Station Master
	Sunny Dry Cleaners
	Excel Dry Cleaners
	Greenfield Dry Cleaners
	Jacksons Dry Cleaners
	Speed Queen Laundromat
	Bank of Ireland (Main St.)
	AIB (Leinster St.)
	Permanent TSB (Main St.)
	KBC Bank (Manor Mills Shopping Centre)
	AIB ATM (Collegeland)
	AIB ATM (Glenroyal Hotel and Leisure Club)
	Ulster Bank ATM (Tesco Maynooth)
	Ulster Bank ATM (Main St.)

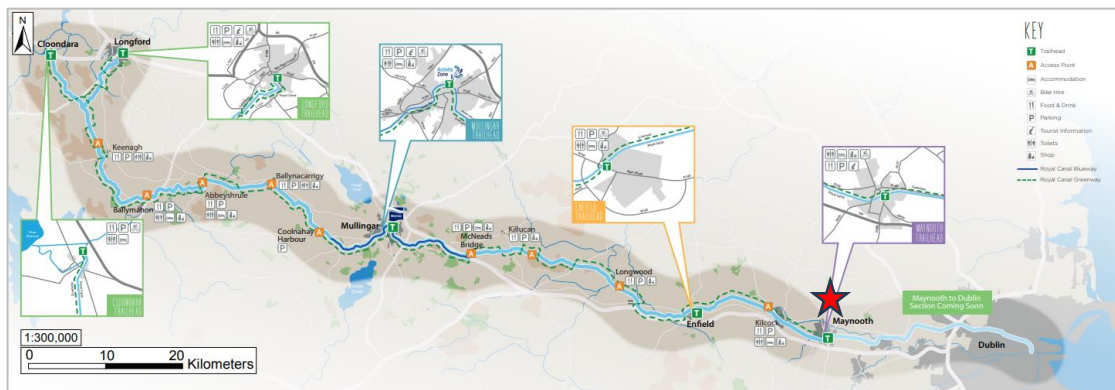
Existing Infrastructure in the Study Area	
Recreational Facilities	Maynooth GAA Club
	Amber Coast Volleyball Club
	Maynooth University Astro Pitch
	Ace Fit Club *
	Anytime Fitness *
	Hybrid Garage Gym *
	Finesse Movement *
	Maynooth University Gym (Phoenix Sports Centre) *
	Glenroyal Hotel & Leisure Club *
	Carton House Golf Club *
	Fairmont Carton House Golf Course
	Yoga Ireland
	Saor Dance and Fitness
	Daisy School of Dance
	Brennan Performing Arts School
	National Science and Ecclesiology Museum, Maynooth University
	The Kildare Gallery
	Creative Arts Centre
Maynooth Castle and Grounds	
Community Facilities and Emergency Services	Post Office
	Life Credit Union
	Social Welfare Branch Office
	Maynooth Library
	Geraldine Hall Recreation Centre
	St. Mary's Catholic Church

Existing Infrastructure in the Study Area	
	St Mary's Church of Ireland
	Maynooth Community Church
	University Chapel
	Divine World Missionaries
	River Valley Baptist Church
	Recycling Bank
	Maynooth Garda Station
	Maynooth Fire Station

*\*Membership Required*

## 6.1 Green and Open Space

The area is well served in terms of green and open space. The Royal Canal Greenway is located approximately 1.5km from the subject site. This greenway extends 130km from Maynooth to Longford town. It is proposed to connect the greenway to Dublin city centre in the future<sup>3</sup>.



Harbour Field is located in Maynooth Town Centre adjacent to the Royal Canal Greenway route. Within Harbour Field is a playing pitch, a community garden, and a children’s playground.



<sup>3</sup> <https://www.waterwaysireland.org/greenways/royal-canal>

The proposed strategic housing development will provide a new public park in Moygaddy, which is further discussed in Section 7 of this report.

## 6.2 Educational Facilities

The area is very well served in terms of educational facilities. National University of Ireland Maynooth (NUIM) has an enrolment of 15,180 students for the 2021/2022 academic year. NUIM ranked # 1 in Ireland in the latest Times Higher Education (THE) Best Young University Rankings in 2022.



There are 7 no. primary and post-primary schools located within the study area. This includes 2 no. Gaelscoil's and 1 no. special school. An Audit of School Provision within 3km of the subject site has been prepared by MKO and is included in **Appendix 1** of this report. This audit outlines that there is a sufficient supply of schools in the area to cater for the proposed development.

A new Maynooth Educational Campus was completed in February 2021, which is described as the largest single school building project in the history of the State<sup>4</sup>. The new campus is located approximately 700m from the subject site. The education campus has provided two new post-primary schools catering for up to 1,000 students each. Maynooth Post Primary School and Maynooth Community College currently occupy the campus.



## 6.3 Childcare Facilities

There are 5 no. childcare facilities located within the study area. These childcare services range from Creche, Montessori, Nursey, and Preschool groups. Maynooth University Creche is available only to staff and students of NUIM.

---

<sup>4</sup> Available at: <https://www.irishtimes.com/news/education/largest-single-school-building-project-gets-under-way-1.3149827>

The proposed development includes for the provision of a two-storey creche facility (514 sqm) and outdoor play area. The proposed development will also provide a Scout Den and public park with a playground adjacent to Moygaddy Castle.

## 6.4 Healthcare

There are a wide range of healthcare facilities located within Maynooth Town Centre. Key facilities include medical centres, community care, physio, counselling, dentist, opticians, and pharmacies.



As part of the wider development of the Moygaddy lands, the applicants are progressing with a separate planning application to Meath County Council for a new 2 storey nursing home (156 no. bedrooms) and a new 3 storey- Primary Care Centre on lands to the east of the proposed SHD site.

## 6.5 Transportation

The primary public transportation services available in the study area include rail and bus services. Maynooth Railway Station is located approximately 1.6km from the subject site. The station serves 2 no. routes which include Dublin – Connolly – Sligo and Dublin – Maynooth, Longford – M3 Parkway.



There are 12 no. bus stops located within the study area. These bus stops serve a range of bus routes including Dublin Bus routes C3, C4, C5, C6, X25 and X26, Transport for Ireland route 139, Bus Eireann route 115, Expressway routes 23 and 23, and Aircoach route 706.

## 6.6 Retail

There is a wide range of existing retail facilities located within the study area. Retail facilities in the area range from shopping centres, supermarkets, restaurants, cafes, takeaway, banks & ATMs, service station, laundry and dry cleaners.

There are 4 no. supermarkets in Maynooth Town Centre, which includes Aldi, Dunnes, Tesco Extra, and SuperValu.



## 6.7 Recreational Facilities

There are a wide range of recreational facilities and services located within the study area. Recreational facilities available include GAA, volleyball, gyms, leisure clubs, golf clubs, dance classes, yoga classes, performing arts,



A number of the recreational services available within the study area are provided on a membership basis. Table 3 above identifies which facilities require a membership, in accordance with Policy SOC POL 6 of the MCDP.

## 6.8 Community Facilities & Emergency Services

Maynooth Town Centre provides a range of key services which cater for the needs of the community within the study area. Key services include post office, credit union, social welfare, library, religious services, recycling service, garda station and fire station.



## 7. PROPOSED FACILITIES

As outlined in section 2.2 of this report, the proposed development will provide for a Strategic Housing Development consisting of 360 residential units and additional key facilities to serve the housing development. Among these key facilities are a range of social and community services.

The proposed development will provide a two-storey creche facility with a gross floor area of 514 sqm. The proposed creche will also include an outdoor play area and associated parking. There will be potential to expand the creche area in the future if necessary.

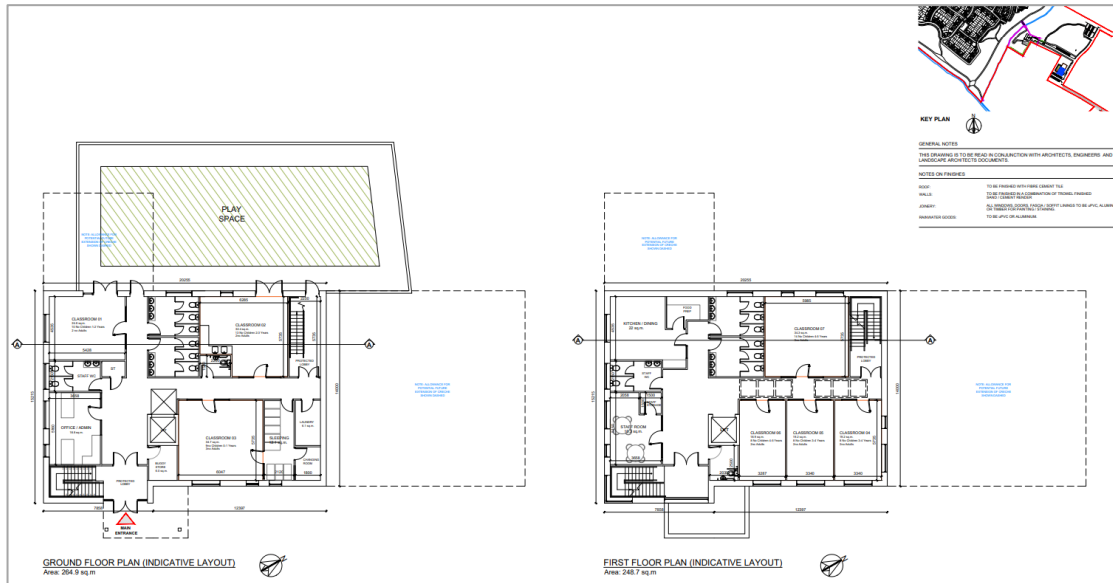


Figure 8: Creche Floor Plan (Source MCORM dwg no. PL500)

The proposed scheme includes the provision of a public park and playground with associated 42 no. car parking spaces adjacent to Moygaddy Castle and pedestrian and cyclist links along the River Rye. The overall public open space (including the High Amenity Lands) equates to 7.98 hectares.

Within this public park it is proposed to provide a children’s playground and a Scout Den facility with a gross floor area of 220sqm which will include a hall, kitchen, and meeting room.



## 8. CONCLUSION

It is considered that there is a sufficient provision of existing social and community infrastructure within the study area to cater for the proposed development and future populations.

The proposed development will further contribute to the development of the area and will provide a new public park at Moygaddy Castle and a linear park along the River Rye, in addition to a new child care facility and a Scout Den building. These additional facilities will serve both the proposed development and the existing developments in the area.

Between the existing facilities and the facilities proposed as part of the subject site development, on the basis of this audit, it is considered that there are no significant disparities in the existing social and community provision in the area to serve both the proposed development and the existing area.



## **APPENDIX 1**

### **AUDIT OF SCHOOL PROVISION**



# SCHOOL CAPACITY ASSESSMENT

Project Reference	210414 Sky Castle Ltd - Moygaddy
Date & Time	09/06/2021
Subject	Moygaddy / Maynooth Local Pre & Post Primary Education Capacity
Author(s)	Orla McCafferty; Reviewed by Pamela Harty

## INTRODUCTION

The purpose of this draft briefing note is to provide a snapshot of the existing primary and secondary school provision within the vicinity of the subject lands.

## DEMOGRAPHIC PROFILE

Population figures from the Census of Population recorded in 2011 and 2016 were used to create a profile of the area surrounding the application site. These were examined at Electoral District (ED) level. To create a fair representation of education facilities within the area, a 3km catchment zone was adopted. The subject site is located within the Rodanstown ED. The analysis also includes the ED's who's boundaries fall within the 3km catchment zone. These areas include Maynooth and Dunboyne.

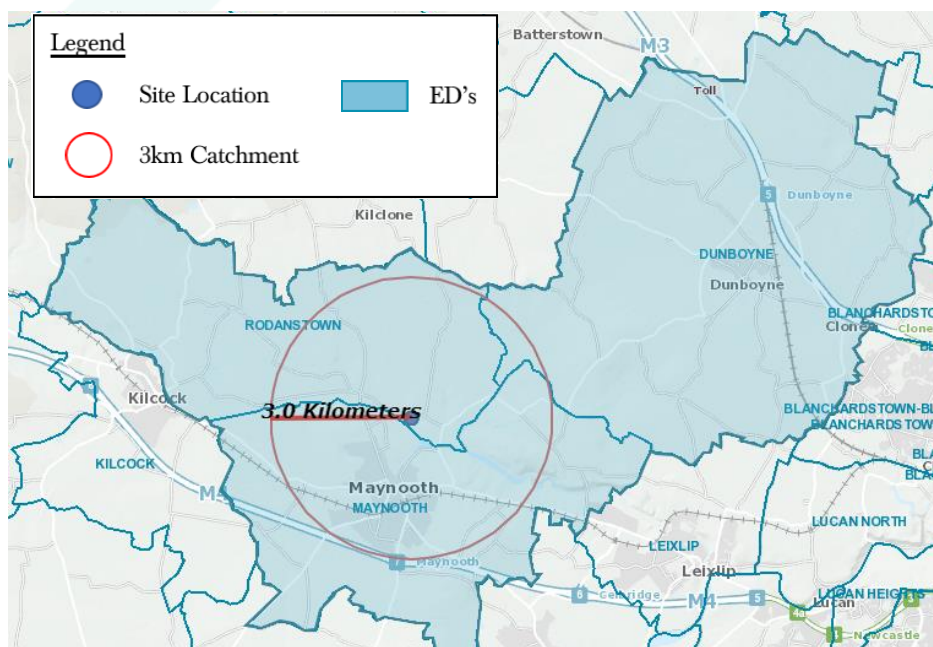


Figure 1: Study Area ED's (Source: MyPlan.ie)



## School Population Demographics

This report considers children attending primary school and secondary school. Typically, children attending creche are aged 0-4 years old. Those attending primary school are typically aged 5-12. Those attending secondary school are typically aged 13-18. Table 1 presents the profile of the study area regarding the creche, primary, and secondary age groups in 2016 and 2011 as compared with the state levels.

Table 1: Population of 0–18-year-olds in the State and Study area 2016

Electoral Division	Total population 2016	0–4-year-olds (creche)	Percentage of total population	5-12 Year Olds (primary)	Percentage of total population	13-18 year olds (secondary)	Percentage of total population
State	4761865	331515	6.96%	548693	11.52%	371588	7.80%
<b>Study Area</b>	<b>27215</b>	<b>2046</b>	<b>7.52%</b>	<b>2953</b>	<b>10.85%</b>	<b>2227</b>	<b>8.18%</b>
Maynooth	15998	1244	7.77%	1604	10.02%	1191	7.44%
Rodanstown	1123	89	7.12%	115	10.24%	91	8.10%
Dunboyne	10094	713	7.06%	1234	12.22%	945	9.36%

Source: CSO.ie

Table 2: Population of 0–18-year-olds in the State and Study area 2011

Electoral Division	Total population 2011	0–4-year-olds (creche)	Percentage of total population	5-12 Year Olds (primary)	Percentage of total population	13-18 year olds (secondary)	Percentage of total population
State	4588252	356329	7.76%	504267	10.99%	344931	7.51%
<b>Study Area</b>	<b>24234</b>	<b>1981</b>	<b>8.17%</b>	<b>2764</b>	<b>11.41%</b>	<b>1942</b>	<b>8.01%</b>
Maynooth	13617	961	7.05%	1364	10.01%	963	7.07%
Rodanstown	1039	56	5.38%	119	11.45%	87	8.37%
Dunboyne	9578	764	7.97%	1281	13.37%	892	9.31%

Source: CSO.ie

### Primary School

Based on CSO data for 2016 there was a total of 2953 children of primary school age (5-12) within the study area which represents 7.52% of the total population. This is higher than the state level, which stands at 6.96%. In 2011, the figure for the study area was 2764, presenting a 6.8% increase between 2011 and 2016.

With 2953 children attending primary school in 2016 within the study area and based on an 8-year primary school cycle there is an average of 369 pupils for each year of primary school.

CSO data for children of creche going age (0-4 years) has presented a figure of 2046 in 2016 and 1981 in 2011. This is an increase of 3.2%. Local demand for primary school places is set to increase given an



estimate of 512 potential pupils for each year for the following 4 years. The data therefore indicates that local demand for primary school places will increase over the period 2016-2020.

### Secondary School

Based on CSO data for 2016 there was a total of 2227 children of secondary school age (13-18) within the study area which represents 8.18% of the total population. This level is higher than the state level, which stands at 7.80%. In 2011, the figure for the study area was 1942, presenting a 14.6% increase between 2011 and 2016.

With 2227 children attending secondary school in 2016 within the study area and based on a school cycle of 6 years, there is an average of 371 pupils for each year of secondary school. CSO data for children of primary school age (5-12) has suggested that there are 369 pupils for each year of school. Therefore, it is indicated that local demand for secondary school places will remain relatively constant over the period 2016-2024.

### Projected School Population Demographics

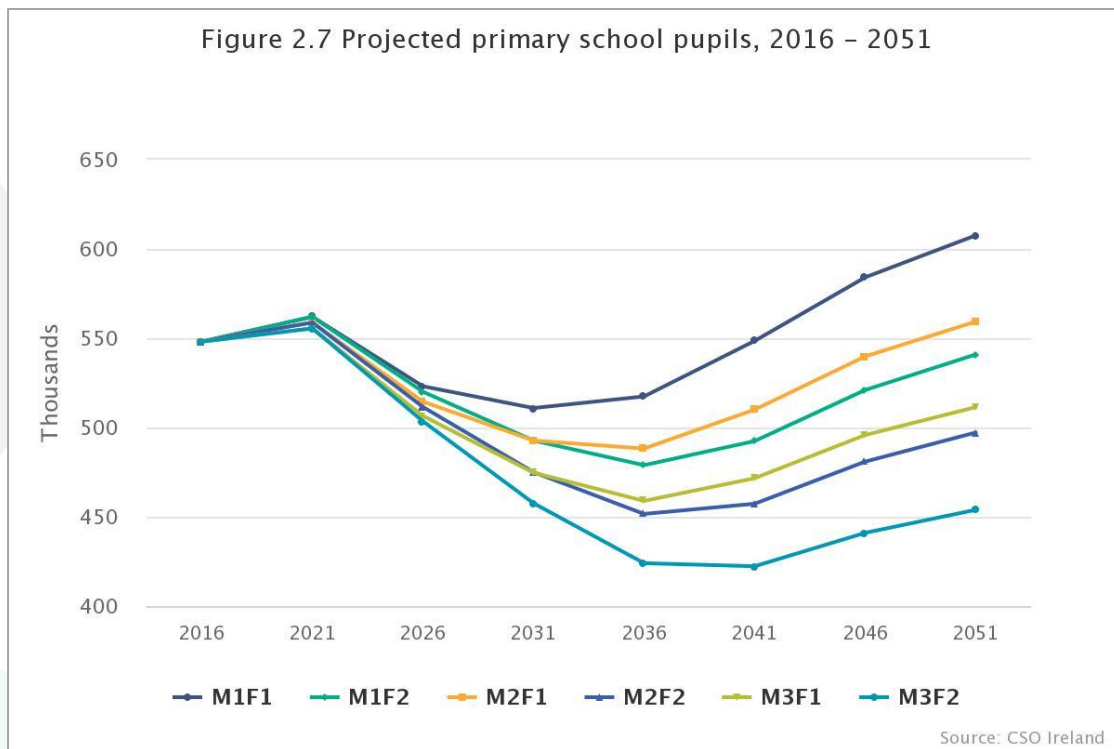
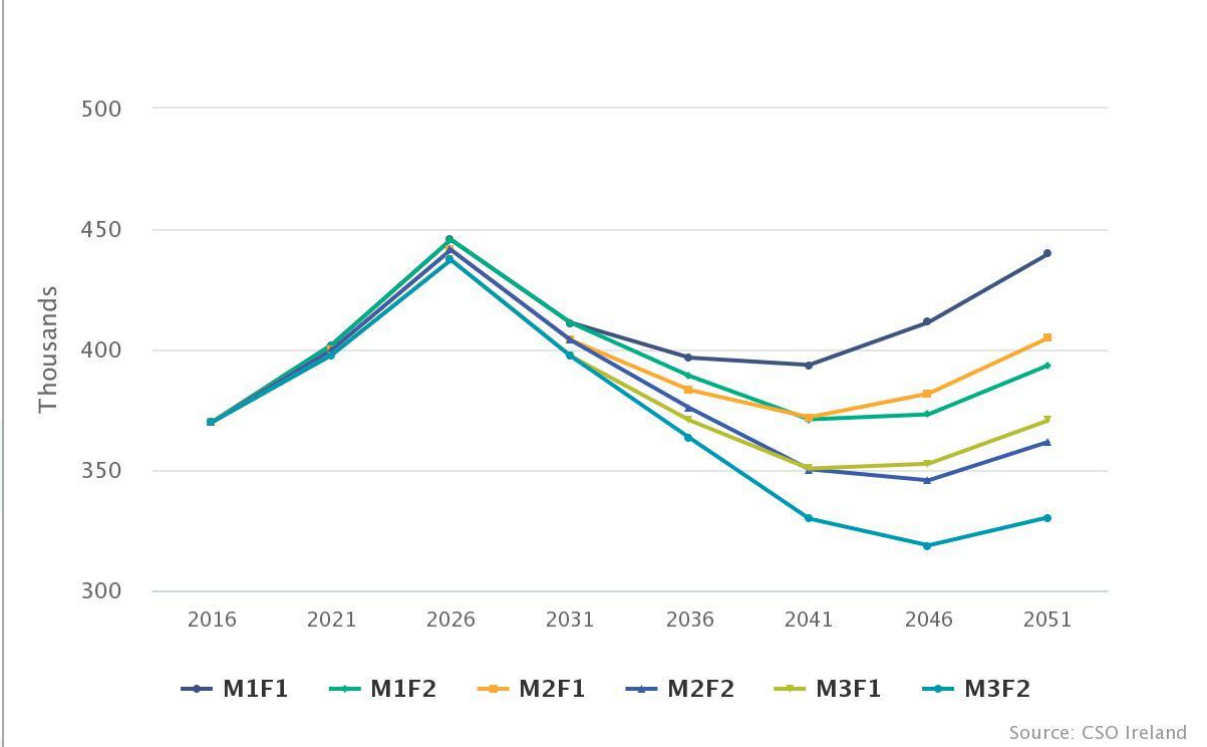


Figure 2.8 Projected secondary school pupils, 2016 – 2051



# AUDIT OF SCHOOL PROVISION

There are 7 schools within the 3km catchment area: **5 primary schools**, **3 secondary schools**, and **1 special school**. The location of these schools is displayed on Figure 2.



Figure 2: Location of Schools within 3km of the Application Site (Source: MyPlan.ie, Education.ie)

## Primary Schools:

There is a total of 5 primary schools in the area with 2044 students enrolled during the school year 2020/2021. The closest school to the site is Gaeilscoil Ruairi, which is a new school that opened in 2019. The school currently has 31 pupils enrolled.

Table 3: Primary School Enrolment 2020/2021

Electoral Division	Primary School	Address	Enrolled (2020/2021)	Average Year Size	Distance to site
Maynooth	Presentation Girls Primary School	Mainstreet, Maynooth, Co. Kildare. W23X0C6	Girls: 648 Boys: 5	82	1.5km



Electoral Division	Primary School	Address	Enrolled (2020/2021)	Average Year Size	Distance to site
			Total: 653		
	Maynooth BNS	Moyglare Road, Maynooth, Co Kildare. W23Y598	Girls: 0 Boys: 591 Total: 591	74	1.6km
	Maynooth Educate Together National School	Celbridge Road, Maynooth, Co. Kildare. W23P466	Girls: 135 Boys: 169 Total: 304	38	3.1km
	Scoil Ui Fiach	Bóthar Chill Droichid, Maigh Nuad, Co. Chill Dara. W23T207	Girls: 233 Boys: 232 Total: 465	58	3km
	Gaeilscoil Ruairí	New Education Campus, Moyglare Road, Maynooth (awaiting permanent building)	Girls: 13 Boys: 18 Total: 31	4 (new school)	0.7km
<b>3km Catchment Area:</b>	-	-	<b>2044</b>	<b>256</b>	<b>1.98km average</b>

Source: [www.education.ie](http://www.education.ie)

The total enrolment for primary schools in the 5 existing primary schools is 2044 pupils. Based on an 8-year primary school cycle the average total for each school year is 256. In this regard, 256 primary school places should therefore become available as one year group leaves and is entered by another one.

Table 4 shows the total number of pupils enrolled per academic year, since 2016 to present. Enrolment numbers in all schools in the total catchment area between 2016-2021 have increased annually by an average of 2.95%.

Table 4: Total Number of Pupils Enrolled in the Catchment Area Primary Schools Within the Last 5 Years

Primary Schools within 3km catchment area	2016/2017	2017/2018	2018/2019	2019/2020	2020/2021
Presentation Girls Primary School	575	602	604	619	653
Maynooth BNS	543	561	574	570	591





Primary Schools within 3km catchment area	2016/2017	2017/2018	2018/2019	2019/2020	2020/2021
Maynooth Educate Together National School	226	235	257	284	304
Scoil Uí Fhiach	476	473	472	466	465
Gaelscoil Ruairí	n/a	n/a	n/a	13	31
<b>Total Study Area</b>	<b>1820 pupils</b>	<b>1871 pupils</b>	<b>1907 pupils</b>	<b>1952 pupils</b>	<b>2044 pupils</b>

Source: [www.education.ie](http://www.education.ie)

## Secondary Schools

Within the 3km catchment area there are 3 post primary schools with a combined enrolment of 1668 pupils for the school year 2020/2021. The schools and enrolment numbers are presented in Table 5.

Table 5: Post Primary School Enrolment 2020/2021

Electoral Division	Post Primary School	Address	Enrolled (2020/2021)	Average Year Size	Distance to site
Maynooth	Gaelcholáiste Mhaigh Nuad	Maynooth Education Campus, Moyglare Road, Maynooth, Co. Kildare.	Girls: 17 Boys: 7 Total: 24	4 (new school)	1.75km
	Maynooth Community College	Maynooth Education Campus, Moyglare Road, Maynooth, Co. Kildare. W23 P2R0	Girls: 311 Boys: 341 Total: 652	109	0.7km
	Maynooth Post Primary School	Maynooth Education Campus, Mariavilla, Maynooth, Co. Kildare. W23 X6X8	Girls: 463 Boys: 529 Total: 992	165	0.7km
<b>3km Catchment Area:</b>	-	-	<b>1668</b>	<b>278</b>	<b>1.05km average</b>

Source: [www.education.ie](http://www.education.ie)

Based on a 6-year secondary school cycle the average total for each school year is 278. In this regard, 278 school places should therefore become available as one year group leaves and is entered by another one.



Table 3 shows the total number of pupils enrolled per academic year, since 2016 to present. Enrolment numbers in all schools in the total catchment area between 2016-2021 have increased annually by an average of 3.9%.

Table 6: Total Number of Pupils Enrolled in the Catchment Area Post-Primary Schools within the last 5 years

Post Primary Schools within 3km catchment area	2016/2017	2017/2018	2018/2019	2019/2020	2020/2021
Gaelcholáiste Mhaigh Nuad	n/a	n/a	n/a	n/a	24
Maynooth Community College	327	387	512	609	652
Maynooth Post Primary School	1141	1099	1033	763	992
<b>Total</b>	<b>1468 pupils</b>	<b>1486 pupils</b>	<b>1545 pupils</b>	<b>1372 pupils</b>	<b>1668 pupils</b>

Source: [www.education.ie](http://www.education.ie)

## Special Schools

Within the 3km catchment area there is 1 special schools with an enrolment of 30 pupils for the school year 2020/2021. The number of students enrolled annually since 2016 has remained the same, as shown in Table 7.

Table 7: Provision of Special Schools Within the Study Area

Electoral Division	Special School	Address	Enrolled (2020/2021)	Distance to site
Rodanstown	Stepping Stones Special School	Harristown, Kilcloon, Co. Meath. A85P796	Girls: 2 Boys: 28 Total: 30	2.7km

Source: [www.education.ie](http://www.education.ie)

Table 8: Total Number of Pupils Enrolled in the Catchment Area Special Schools within the last 5 years.

Special Schools within 3km catchment area	2016/2017	2017/2018	2018/2019	2019/2020	2020/2021
Stepping Stones Special School	30	30	30	30	30

Source: [www.education.ie](http://www.education.ie)

*End of Briefing Note*



